

Tidworth Area Board 15 November 2010

Chairman's Announcements

Item No.01

Tidworth 1st Bridge

The Project



About the Bridge

Tidworth 1st Bridge is a single span steel joist structure with a concrete deck, which is approximately 22m wide. The date of construction is not known.

What's wrong with it

The bridge deck has been assessed as sub-standard and therefore needs to be replaced. A weight restriction is not deemed appropriate as the route is on an A class road.

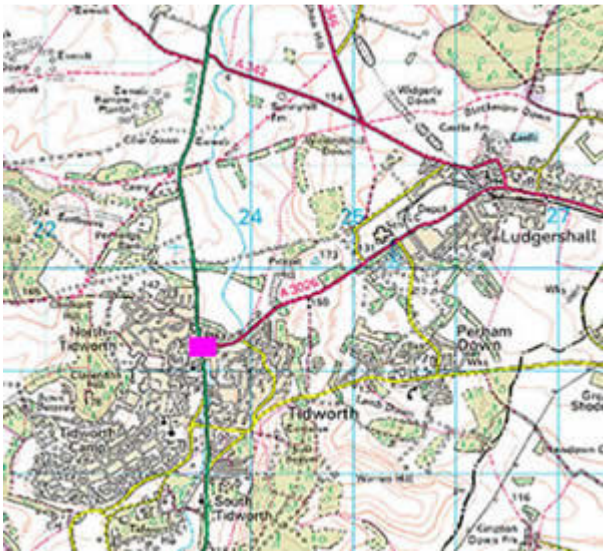
The pedestrian guardrail parapets do not meet modern standards and are considered to be non-compliant.

What we intend to do

The original bridge deck will be dismantled and a new stronger deck will be constructed on the existing masonry abutments. A new steel containment parapet will be installed.

The visual appearance of the bridge will change slightly with the new parapets and improved elevations, but this will be relatively minor. The new bridge will be however slightly wider to allow for the possibility of adding a mini roundabout in the future.

Where it is



Tidworth 1st Bridge on the northern edge of Tidworth carries the A338, Salisbury to Marlborough road, over the River Bourne.

See location map to the left.

© Copyright 2010 Wiltshire Council (100049050)

Will we close the road?

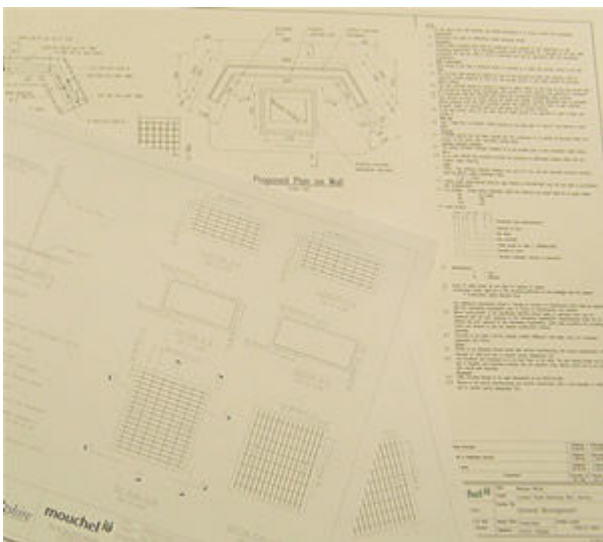
No, not for the whole duration of the works. The majority of the works will be undertaken using three way traffic lights on the junction. It is currently proposed to temporarily prohibit traffic from turning right out of Ludgershall Road and similarly left down Pennings Road. This will improve traffic flows during the works.

During the scheme there will two or three road closures on the A338, each lasting up to six hours, to allow for the placing of the precast concrete beams and for when the three sections of the bridge are stitched together. (It is important to minimise vibrations and deflections with the concrete during this process). The closures will be timed to have a minimum impact on the travelling public.

Pedestrian access will be maintained during the works.

What we're doing next

Design of the bridge deck has begun and the works are due to commence in 2011.



Contact Details:

Email: bridges@wiltshire.gov.uk

Fax: 01225 713400

Postal Address:

Highways Asset Management

Department of Neighbourhood and Planning

Wiltshire Council

County Hall

Trowbridge

Wiltshire

BA14 8JN